



Ceiling Anchor

Strong steel clip attaches easily to grid ceilings, 6" riser, side entry.

PX1A	8-1/2" x 11"
PX2A	11" x 14"
PX3A	11" x 17"



Magnetic Mount

3-1/4" Round magnetic base for gondola tops, 6" riser, side entry.

PX1M	8-1/2" x 11"
PX2M	11" x 14"
PX3M	11" x 17"



Flange

3-1/4" round steel flange screws to wall or ceiling. 6" riser. Side entry.

PX1F	8-1/2" x 11"
PX2F	11" x 14"
PX3F	11" x 17"

IMPRINTABLE

Clamp-On

VEE Clamp for round tubes 7/8" to 1-3/4" diameter, and flats 5/8" to 2-1/2". 4" riser, top entry.

PX1G	8-1/2" x 11"
PX2G	11" x 14"
PX3G	11" x 17"

Custom clamps available.

Table Top

Weighted 6-3/4" round base, felt feet, 4" riser. Top entry.

PX1T	8-1/2" x 11"
PX2T	11" x 14"
PX3T	11" x 17"

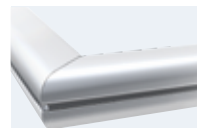
↓
For Media
up to 3/16"
↑

Must specify for all frame orders this page: >

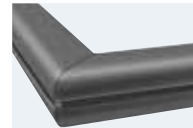
Specify: Model — Orientation* — Color*

	Orientation*	Color*
H	Horizontal	-S Satin Silver
V	Vertical	-B Matte Black

*Doesn't affect price.



Curvilinear Satin Silver



Curvilinear Matte Black



Magnetic Mount

Double magnetic base perfect for gondola tops.

PX1D	8-1/2" x 11"
PX2D	11" x 14"
PX3D	11" x 17"